

ZOOMLION

ZTC1300V753G TRUCK CRANE



4.0
PRODUCTS

ZTC1300V753G

TRUCK CRANE

Max. load moment of
basic boom

4292 kN.m

Max. load moment of
max. length main boom

2117 kN.m










Max. lifting height of jib
(Optional 9.5m extended jib)

103.6 m

CRANE AND COMPONENT WEIGHTS

Axle	1	2	3	4	5	Total weight
T	11.3	11.3	11.2	11.2	8	53

Working Speed

	 (km/h)	 %	
1,2axle:385/95R25 3,4axle:325/95R24 5axle:325/95R24(Standard) 415/80R22(Optional)	80km/h max	45%	Forward speeds: 12.74/9.43/6.67/ 4.83/3.53 /2.64/1.95/1.38/1.00/0.73, Reverse speeds:13.73/2.84
Drive	Operation Speed	Rope diameter/ length	Max. single line pull
	130m/min	φ 20 mm/340 m	8500kg
	120m/min	φ 20 mm/220 m	8500kg
	0-1.6 r/min		
	70s/-		
	800s/-		

Hook Detailed Description

Specification	Weight (t)	Transport dimensions (mm)	Fall	Single/double hook	Standard/optional configuration
90t	1070	1680×740×650	12	double hook	Optional
80t	685	1575×487.5×520	12	Single hook	Optional
70t	689	1532×560×528	12	Single hook	Optional
60t	670	1473×540×528	12	Single hook	Optional
60t	660	1480×531×528	8	double hook	Standard
35t	380	1304×323×560	6	Single hook	Optional
8t	200	φ 270×910	1	Single hook	Standard

SPECIFICATIONS

Crane Superstructure

Boom and telescoping system

The boom consists of 7 oval boom sections made of $\delta s=960\text{MPa}$ high strength structural steel.

The boom head adopts new plate-type structure, realizing larger lapping ratio between boom sections, and matching with embedded sliding blocks.

The telescopic boom sections are telescoped in / out via the single-cylinder pinning mechanism with interlocking device, which can realize mechanical interlock and telescoping in order.

Jib

Two jib lengths: 10.4m and 17.5m, offset: 0, 15 or 30. A 9.5m extension is optional. It can be used with the boom, or with boom + jib. It can travel with the crane instead of the jib.

Rooster sheave

It is secured at the outside of the boom head when it is not used. It can be rotated around the shaft and pinned onto the boom head when it is used.

Slewing platform

Single ribbed plate structured and optimized slewing platform made from high-strength steel plate. The engine hood is of a human-based layout.

An interlocking mechanism is installed at the front end, so as to prevent the superstructure from rotating during crane travelling process.

Derricking mechanism

1 front-mounted hydraulic cylinder with safety balance valve provides the boom with smooth derricking movements from -1° to 80° .

Slewing mechanism

There are two reducers installed in the slewing mechanism. Via the planetary gear reducer, the axial plunger hydraulic motor drives the pinion gear on the output shaft to rotate

the exterior toothed ring of slewing ring fixed on chassis frame, providing superstructure with 360° unlimited slewing.

Hoist mechanism

The main winch mechanism and auxiliary winch mechanism(optional) can be controlled independently and also can carry out simultaneous movements.

Adopt high-tensile torsion resistant hoist rope.

Operator's cab

It is of steel-structure welded with right-mounted instrument console and adjustable seat with headrest. Equipped with a cab tilting mechanism. AC and heater.

Outriggers

H-type outriggers, which are in box-shaped structure and welded of low-alloy and high-strength steel plate.

The 5th outrigger is installed under the driver's cab, providing 360° -degree working area after the 5th outrigger is extended.

Hydraulic system

The superstructure hydraulic system is controlled in the electro-hydraulic proportional way through the integrated load moment limiter.

Electrical system

Double-wire system, 24 Volt DC.

Safety devices

Automatic load moment limiter, warning light, lowering limit switch, relief valve, hoisting limit switch etc.

Counterweight






Total weight: 42 tons standard counterweight. The 32 tons movable counterweight can be moved forward or backward by 550mm.

Crane chassis

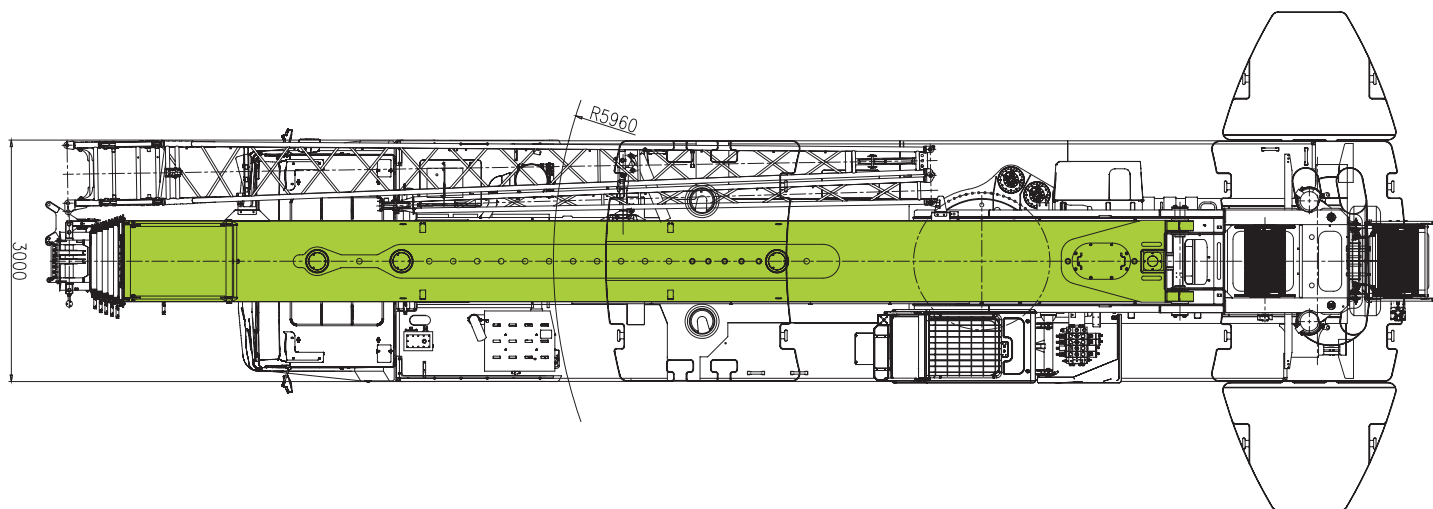
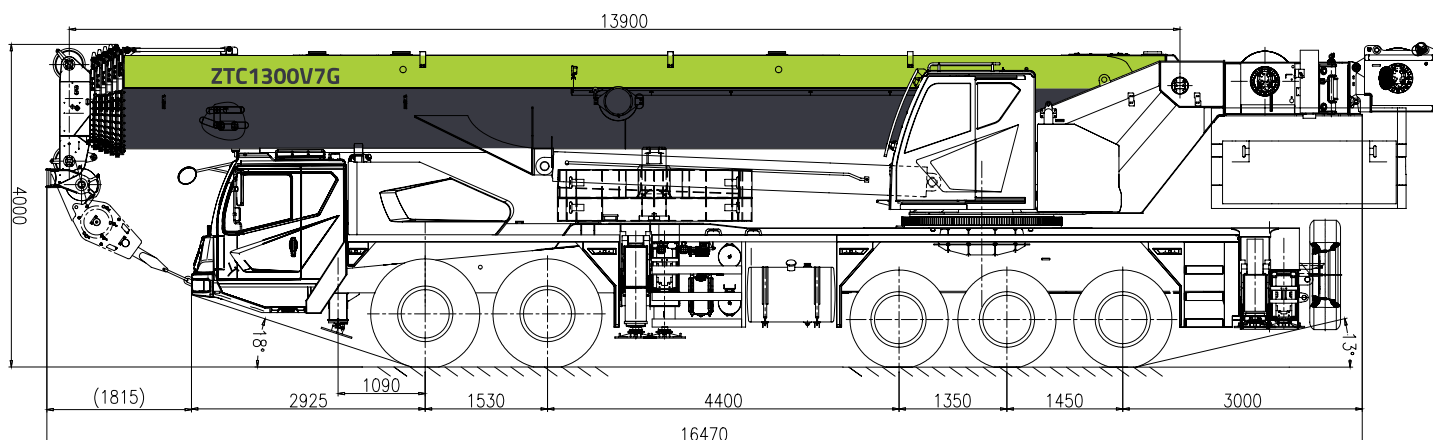
Engine:

Yuchai YCK11430-50 engine, rated power: 316/1900kW/r/min, Max. output torque: 2070/1100-1500N.m/r/min, Euro V emission standard.

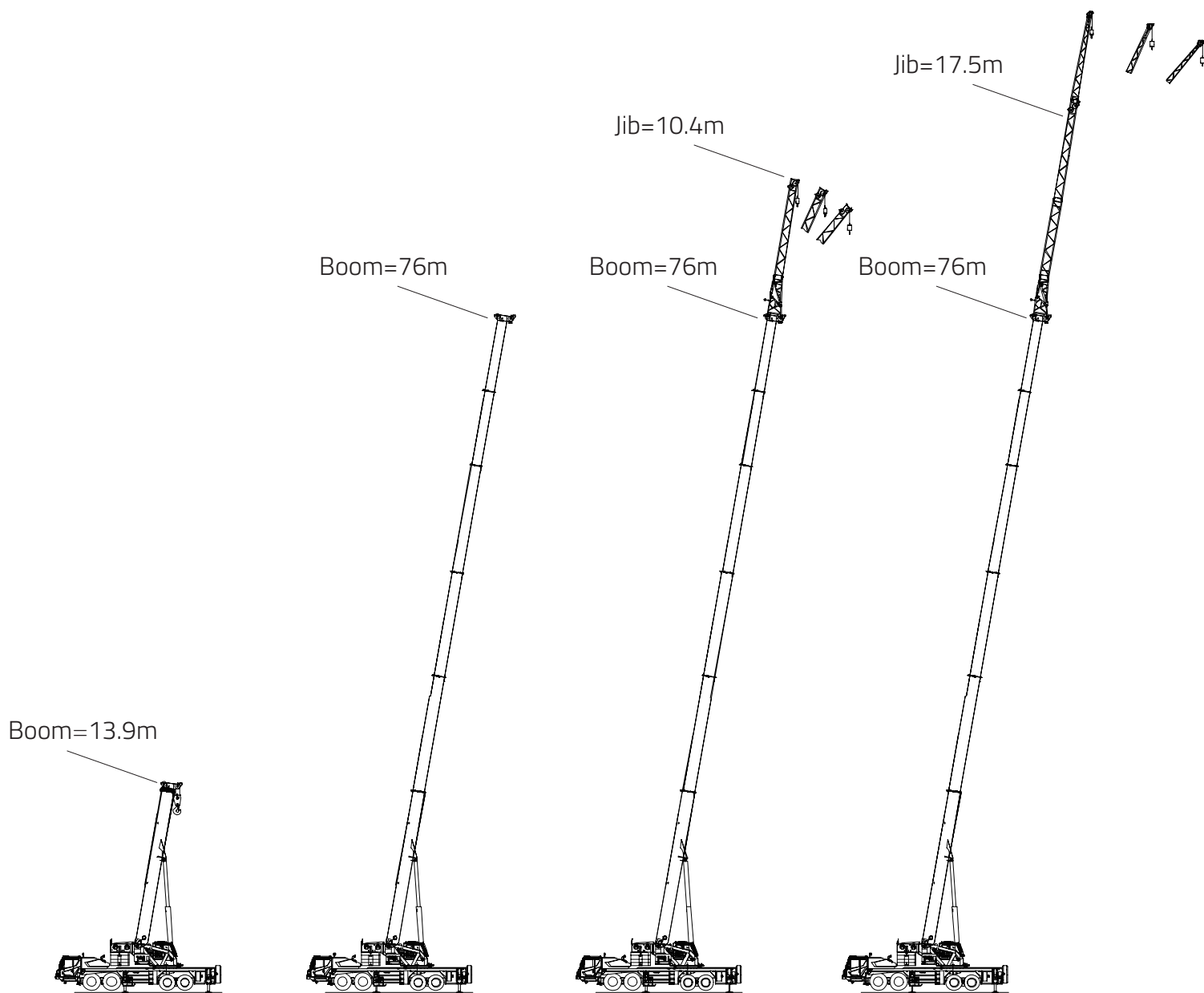
TECHNICAL DATA

	Item	Unit	Value	Remarks
 Working performance	Max. rated lifting capacity	kg	130000	
	Max. load moment of basic boom	kN.m	4292	
	Max. load moment of Max. length main boom	kN.m	2117	
	Max. lifting height of basic boom	m	15.4	
	Max. lifting height of main boom	m	76.5	
	Max. lifting height of jib	m	94.2	
	Max. lifting height of jib(Optional 9.5m extended jib)	m	103.6	
 Working speeds	Max. hoist rope speed(Main winch)	m/min	130	
	Max. hoist rope speed (Auxiliary winch)	m/min	120	
	Boom derricking up time	s	70	
	Boom telescoping out time	s	800	
	Slewing speed	r/min	0~1.6	
 Driving	Max. driving speed	km/h	80	
	Max. gradeability	%	45	
	Min. turning diameter	m	24	
	Min. ground clearance	mm	330	
	Oil consumption per hundred kilometer	L	48	
 Weight	Deadweight in driving condition(total weight)	kg	53000	
	Complete vehicle kerb mass	kg	52870	
	I , II axle load	kg	11300/11300	
	III , IV axle load	kg	11200/11200	
	V axle load	kg	8000	
 Dimensions	Overall dimensions (L×W×H)	mm	16470×3000×4000	
	Longitudinal distance between outriggers	m	7.75	
	Transversal distance between outriggers	m	8.2	outriggers completely extended
	Tail slewing radius	mm	5495	
	Main boom length	m	13.9~76.0	
	Main boom angle	°	-1~80	
	Jib length	m	10.4~17.5	
	Offset	°	0~15~30	
	extended jib length	m	9.5	Optional
	Offset	°	0	

DIMENSIONS

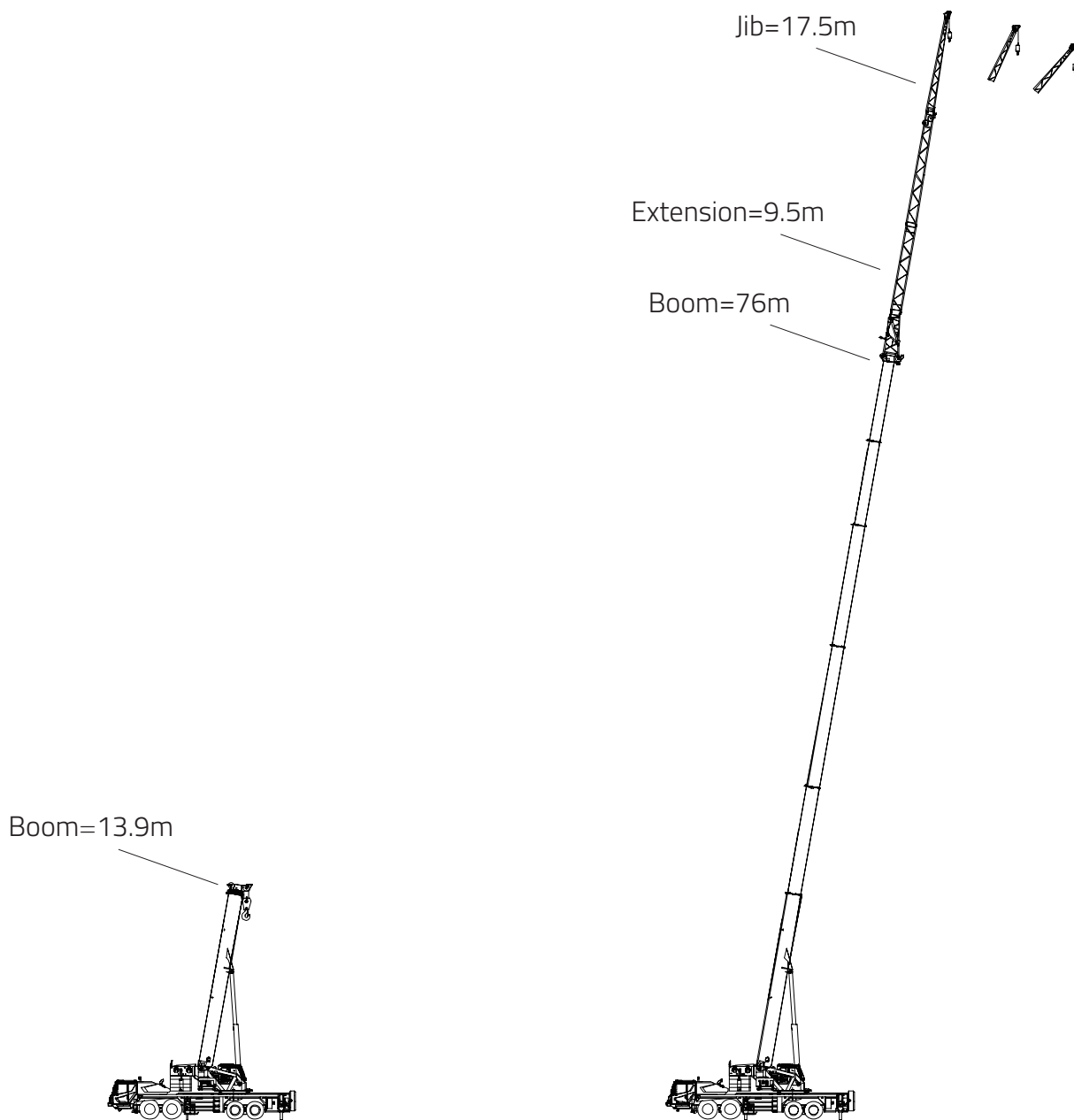


COMBINATION



Working Condition	Boom/Jib Length	Note
Boom	13.9-76m	
Boom + extension	Boom 70.3m + 9.5 m extension	
Boom + extension	Boom 76m + 9.5 m extension	
Boom + 10.4m jib	Boom 76m + 10.4 m jib	
Boom + 17.5m jib	Boom 76m + 17.5 m jib	

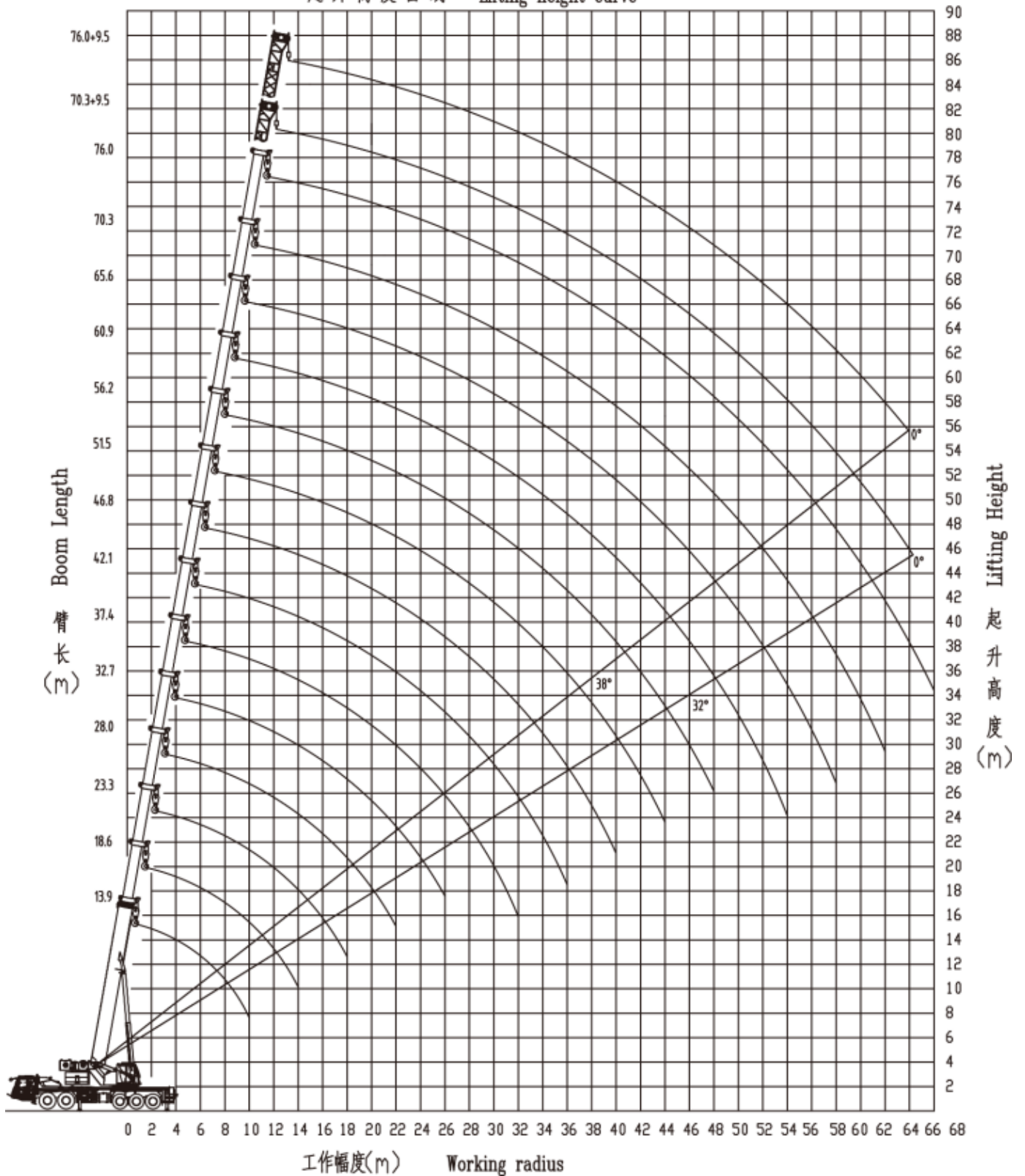
OM COMBINATION



Working Condition	Boom/Jib Length	Note
Boom + extension + 17.5m jib	Boom 76m + 9.5m extension + 17.5 m jib	

LIFTING HEIGHT CURVE

起升高度曲线 Lifting height curve



RATED CAPACITY CHART

with boom only

10t fixed counterweight moved forward +32t movable counterweight moved backward

Outriggers fully extended to 8.2m Over side and rear working area

Working radius (m)	Boom length (m)												
	13.9	18.6	18.6	18.6	18.6	18.6	23.3	23.3	23.3	23.3	23.3	23.3	
2.5	130.0**												
3	110.0	43.5	66.5	92.0	92.0	92.0	32.0	46.8	70.0	79.5	85.0	85.0	
3.5	95.0	41.5	61.5	87.0	87.0	87.0	30.0	43.4	65.0	73.5	81.0	81.0	
4	90.0	39.0	57.0	82.0	82.0	82.0	28.0	40.5	60.0	68.5	77.0	77.0	
4.5	85.0	37.5	53.0	78.0	78.0	78.0	26.5	38.0	56.5	64.5	73.0	73.0	
5	80.0	35.5	50.0	72.5	75.0	75.0	25.0	35.7	53.5	60.5	70.0	70.0	
6	73.0	32.5	44.0	65.0	70.0	70.0	22.6	31.9	47.6	54.0	65.0	65.0	
7	62.0	30.0	39.5	58.0	58.0	58.0	20.6	28.8	43.0	48.6	56.0	56.0	
8	51.0	27.9	36.0	52.0	52.0	52.0	19.0	26.2	39.2	44.3	51.0	51.0	
9	45.0	26.1	32.8	47.0	46.5	46.0	17.5	24.1	36.0	40.6	46.0	46.0	
10	40.5	24.5	30.2	43.0	42.0	41.0	16.3	22.2	33.2	37.4	42.0	42.0	
11		23.2	28.0	40.0	39.0	38.0	15.3	20.6	30.8	34.7	38.0	38.0	
12		22.0	26.1	36.0	35.0	34.0	14.3	19.3	28.7	32.3	35.0	35.0	
14		20.0	23.0	31.0	30.0	29.0	12.7	17.0	25.3	28.5	31.0	30.0	
16							11.5	15.2	22.6	25.3	26.0	26.0	
18							10.5	13.8	20.5	22.0	22.0	21.5	
Reeving	12	11					10						
Hook	60t anchor hook												
Telescoping mode	I	1	1	1	1	1	1	1	1	1	1	1	2
	II	1	1	1	1	1	2	1	1	1	1	2	2
	III	1	1	1	1	2	1	1	1	1	2	2	1
	IV	1	1	1	2	1	1	1	1	2	2	1	1
	V	1	1	2	1	1	1	1	2	2	1	1	1
	VI	1	2	1	1	1	1	3	2	1	1	1	1

Unit: ton

This crane is provided various Rated capacity charts. The operator should select proper rated lifting load referring to resp. lifting capacity tables according to actual working conditions.

1. A 60t hook is a standard configuration. For rated capacities exceeding 60t, other hooks satisfying such rated capacities should be used
2. As for OMs more than 90t (or reeving of wire rope over 12), the pulley on the boom frame and the hook also need to be modified. Please contact the manufacturer in advance if necessary.
3. The telescoping modes marked with the colour ■ are optimal ones. OM marked with the asterisks (**) is a nominal one.
4. Do not lift a load that is above the capacity of the crane under any condition, especially for small counterweight and intermediately extending outrigger OM.
5. Do not perform the lifting operation when the wind speed exceeds the limit, especially for large boom length and large working radius OM.
6. When the outriggers are intermediately extended, max. counterweight is 31t. Otherwise, risk of topple over backwards.
7. A temperature difference occurs between the side facing the sun and the side facing away from the sun in cranes with telescopic booms. This causes that the boom frame material expands when heated and contracts when cooled, which can affect the straightness of the boom frame to some extent.
8. Select the proper hook and multiple rope fall during lifting operation. Reduce the working pulling force of single rope, and thus reduce the risk of wire rope damage.

RATED CAPACITY CHART

with boom only

10t fixed counterweight moved forward +32t movable counterweight moved backward

Outriggers fully extended to 8.2m

Over side and rear working area

Working radius (m)	Boom length (m)												
	28.0	28.0	28.0	28.0	28.0	28.0	32.7	32.7	32.7	32.7	32.7	32.7	
3													
3.5													
4	25.0	25.0	45.0	60.0	75.0	75.0							
4.5	23.5	23.5	42.5	56.2	71.0	71.0							
5	22.2	22.1	40.1	52.8	68.0	68.0	19.5	24.2	28.7	43.6	60.0	65.0	
6	19.9	20.0	36.1	47.1	62.0	62.0	17.5	22.0	25.8	39.6	54.0	59.0	
7	18.1	18.0	32.9	42.3	56.0	56.0	15.8	20.0	23.4	36.3	49.0	54.0	
8	16.5	16.4	30.1	38.6	50.0	50.0	14.4	18.4	21.3	33.4	44.5	50.0	
9	15.2	15.1	27.8	35.3	47.0	47.0	13.2	16.9	19.6	30.9	41.0	46.0	
10	14.1	14.0	25.7	32.5	42.0	42.0	12.2	15.7	18.1	28.8	38.0	42.0	
11	13.1	13.0	24.0	30.1	37.5	37.5	11.3	14.7	16.8	27.0	35.0	38.0	
12	12.3	12.1	22.5	28.0	35.0	35.0	10.5	13.8	15.6	25.4	33.0	35.0	
14	10.8	10.7	19.9	24.6	30.0	30.0	9.3	12.2	13.8	22.5	29.0	30.0	
16	9.7	9.5	17.9	21.8	26.0	26.0	8.2	10.9	12.2	20.0	26.0	26.0	
18	8.8	8.6	16.3	19.6	22.6	22.2	7.4	9.9	11.0	18.0	23.3	23.0	
20	8.0	7.9	14.9	17.9	19.5	18.5	6.7	9.0	10.0	16.4	20.1	19.2	
22	7.3	7.1	13.7	16.4	17.0	15.5	6.1	8.3	9.1	15.0	17.6	16.3	
24							5.6	7.7	8.3	13.8	15.3	13.9	
26							5.1	7.1	7.6	12.8	13.3	11.9	
Reeving	9						8						
Hook	60t anchor hook												
Telescoping mode	I	1	1	1	1	1	2	1	1	1	1	1	2
	II	1	1	1	1	2	2	1	1	1	1	2	2
	III	1	1	1	2	2	2	1	1	1	2	2	2
	IV	1	1	2	2	2	1	1	2	3	2	2	2
	V	2	3	2	2	1	1	3	3	2	2	2	1
	VI	3	2	2	1	1	1	3	2	2	2	1	1

Unit: ton

RATED CAPACITY CHART

with boom only

10t fixed counterweight moved forward +32t movable counterweight moved backward

Outriggers fully extended to 8.2m Over side and rear working area

Working radius (m)	Boom length (m)												
	37.4	37.4	37.4	37.4	37.4	37.4	42.1	42.1	42.1	42.1	42.1	42.1	
5													
5.5													
6	19.5	24.0	27.0	27.0	45.0	58.0							
7	18.0	22.0	24.5	24.5	41.5	54.0							
8	16.5	20.0	22.5	22.5	38.5	50.0	17.3	20.5	20.5	25.0	30.5	41.5	
9	15.0	18.5	20.5	20.5	36.0	46.0	16.1	19.0	19.0	23.0	28.0	39.0	
10	14.0	17.0	19.0	19.0	33.5	43.0	15.0	17.5	17.5	21.5	26.0	36.5	
11	13.0	15.5	17.5	17.5	31.5	40.0	14.0	16.0	16.0	20.0	24.0	34.5	
12	12.1	14.5	16.4	16.0	29.5	37.0	13.1	15.0	15.0	18.5	22.0	32.5	
14	10.7	12.7	14.4	13.9	26.5	30.0	11.5	13.0	13.0	16.0	19.2	28.5	
16	9.5	11.2	12.6	12.3	24.0	27.0	10.2	11.4	11.2	14.0	17.0	26.0	
18	8.6	9.9	11.2	11.0	21.5	23.8	9.2	10.2	9.9	12.6	15.2	23.5	
20	7.8	8.9	10.0	9.9	19.0	20.1	8.3	9.2	8.9	11.4	13.7	20.9	
22	7.1	8.1	9.1	9.0	17.5	17.1	7.6	8.4	8.0	10.4	12.4	17.9	
24	6.5	7.4	8.3	8.2	16.0	14.7	6.9	7.6	7.3	9.5	11.3	15.5	
26	6.0	6.8	7.6	7.5	14.2	12.7	6.3	7.0	6.7	8.7	10.4	13.5	
28	5.5	6.3	7.0	6.9	12.5	11.0	5.8	6.4	6.1	7.8	9.5	11.8	
30	5.1	5.8	6.5	6.3	11.0	9.6	5.4	5.9	5.6	7.4	8.8	10.4	
32	4.8	5.4	6.0	5.8	9.8	8.4	5.0	5.5	5.1	6.9	8.1	9.2	
34							4.6	5.1	4.7	6.4	7.5	8.1	
36							4.3	4.7	4.4	6.0	7.0	7.2	
Reeving	7						5						
Hook	60t anchor hook												
Telescoping mode	I	1	1	1	1	1	2	1	1	1	1	1	2
	II	1	1	1	1	2	2	1	1	1	2	3	2
	III	1	1	2	3	2	2	1	2	3	3	2	2
	IV	2	3	3	2	2	2	3	3	3	2	2	2
	V	3	3	2	2	2	2	3	3	2	2	2	2
	VI	3	2	2	2	2	1	3	2	2	2	2	2

Unit: ton

RATED CAPACITY CHART

with boom only

10t fixed counterweight moved forward +32t movable counterweight moved backward

Outriggers fully extended to 8.2m

Over side and rear working area

Working radius (m)	Boom length (m)												
	46.8	46.8	46.8	46.8	46.8	46.8		51.5	51.5	51.5	51.5	51.5	
6													
7													
8													
9	16.4	17.0	20.0	24.0	29.5	32.0							
10	15.3	15.7	18.5	22.5	27.5	31.0		15.0	17.2	20.0	24.0	27.5	
11	14.4	14.5	17.2	21.0	25.7	30.0		13.8	16.0	18.8	22.5	26.0	
12	13.5	13.5	16.1	19.7	24.1	28.0		12.9	15.0	17.7	21.2	24.5	
14	12.0	11.8	14.1	17.5	21.3	25.0		11.3	13.2	15.7	19.0	22.0	
16	10.7	10.4	12.5	15.6	19.0	22.5		10.0	11.7	14.0	17.2	20.0	
18	9.6	9.2	11.1	13.9	17.1	20.0		8.9	10.4	12.6	15.6	18.0	
20	8.6	8.2	10.0	12.5	15.5	18.0		8.0	9.4	11.4	14.2	16.3	
22	7.8	7.4	9.1	11.3	14.1	16.2		7.2	8.5	10.4	12.8	14.7	
24	7.1	6.7	8.3	10.3	12.9	14.7		6.5	7.7	9.5	11.7	13.3	
26	6.5	6.1	7.6	9.4	11.8	13.0		5.9	7.0	8.7	10.7	12.1	
28	6.0	5.5	7.0	8.6	10.9	11.3		5.4	6.4	8.0	9.8	11.0	
30	5.5	5.0	6.4	7.9	10.1	9.9		4.9	5.9	7.4	9.0	9.8	
32	5.1	4.6	5.9	7.3	9.1	8.7		4.5	5.4	6.8	8.3	8.6	
34	4.7	4.3	5.5	6.7	8.0	7.6		4.1	5.0	6.2	7.7	7.6	
36	4.4	3.9	5.1	6.2	7.1	6.7		3.8	4.6	5.7	7.1	6.7	
38	4.1	3.6	4.7	5.7	6.3	5.9		3.5	4.3	5.2	6.4	5.9	
40	3.8	3.3	4.4	5.3	5.6	5.2		3.2	4.0	4.8	5.7	5.1	
42								3.0	3.7	4.5	5.0	4.5	
44								2.8	3.4	4.2	4.4	3.9	
Reeving	4												
Hook	60t anchor hook												
Telescoping mode	I	1	1	1	1	2	3		1	1	1	2	3
	II	1	1	2	3	3	2		1	2	3	3	3
	III	2	3	3	3	2	2		3	3	3	3	2
	IV	3	3	3	2	2	2		3	3	3	2	2
	V	3	3	2	2	2	2		3	3	2	2	2
	VI	3	2	2	2	2	2		3	2	2	2	2

Unit: ton

RATED CAPACITY CHART

with boom only

10t fixed counterweight moved forward +32t movable counterweight moved backward

Outriggers fully extended to 8.2m Over side and rear working area

Working radius (m)	Boom length (m)												
	56.2	56.2	56.2	56.2	60.9	60.9	60.9		65.6	65.6	70.3	76	
12	14.0	16.2	18.8	22.0									
14	12.4	14.4	16.8	19.8	13.0	15.3	17.5						
16	11.0	12.8	15.2	18.0	11.9	13.8	16.0		12.5	14.0			
18	9.9	11.6	13.8	16.4	10.8	12.5	14.5		11.5	13.0	11.8		
20	8.9	10.4	12.6	14.9	9.8	11.4	13.2		10.5	12.0	11.0	8.8	
22	8.0	9.5	11.5	13.5	8.9	10.4	12.1		9.7	11.0	10.2	8.6	
24	7.3	8.7	10.5	12.3	8.2	9.6	11.1		8.9	10.2	9.5	8.3	
26	6.7	7.9	9.6	11.2	7.5	8.8	10.2		8.2	9.4	8.8	8.0	
28	6.1	7.3	8.9	10.2	6.9	8.1	9.4		7.6	8.7	8.2	7.7	
30	5.6	6.7	8.3	9.3	6.4	7.5	8.6		7.0	8.0	7.6	7.2	
32	5.2	6.2	7.7	8.5	5.9	7.0	8.0		6.5	7.4	7.1	6.7	
34	4.8	5.7	7.1	7.7	5.5	6.5	7.4		6.1	6.9	6.6	6.2	
36	4.4	5.3	6.6	6.8	5.1	6.1	6.8		5.7	6.4	6.1	5.7	
38	4.1	4.9	6.1	6.0	4.7	5.7	6.2		5.3	5.9	5.7	5.3	
40	3.8	4.6	5.6	5.3	4.4	5.3	5.5		5.0	5.5	5.3	4.9	
42	3.5	4.3	5.3	4.6	4.1	4.9	4.9		4.7	5.1	4.9	4.5	
44	3.2	4.0	4.7	4.0	3.8	4.5	4.3		4.4	4.7	4.6	4.2	
46	3.0	3.7	4.1	3.5	3.5	4.2	3.8		4.1	4.1	4.3	3.9	
48	2.8	3.4	3.6	3.0	3.3	3.9	3.3		3.8	3.6	4.0	3.6	
50					3.1	3.5	2.8		3.5	3.2	3.6	3.4	
52					2.9	3.1	2.4		3.2	2.8	3.2	3.2	
54					2.7	2.7	2.0		3.0	2.4	2.8	2.9	
56									2.8	2.0	2.4	2.5	
58									2.5	1.7	2.1	2.2	
60												1.8	1.9
62												1.5	1.6
64													1.3
66													1.1
Reeving	3												
Hook	60t anchor hook												
Telescoping mode	I	1	1	2	3	1	2	3		2	3	3	4
	II	2	3	3	3	3	3	3		3	3	3	4
	III	3	3	3	3	3	3	3		3	3	3	4
	IV	3	3	3	2	3	3	3		3	3	3	4
	V	3	3	2	2	3	3	2		3	3	3	4
	VI	3	2	2	2	3	2	2		3	2	3	4

Unit: ton

RATED CAPACITY CHART

with boom only

10t fixed counterweight moved forward +32t movable counterweight moved backward

Outriggers fully extended to 8.2m

Over side and rear working area

Working radius (m)	Boom length (m)												
	13.9	18.6	18.6	18.6	18.6	18.6	23.3	23.3	23.3	23.3	23.3	23.3	
3	110.0	43.5	66.5	92.0	92.0	92.0	32.0	46.8	70.0	79.5	85.0	85.0	
3.5	95.0	41.5	61.5	87.0	87.0	87.0	30.0	43.4	65.0	73.5	81.0	81.0	
4	90.0	39.0	57.0	82.0	82.0	82.0	28.0	40.5	60.0	68.5	77.0	77.0	
4.5	85.0	37.5	53.0	78.0	78.0	78.0	26.5	38.0	56.5	64.5	73.0	73.0	
5	80.0	35.5	50.0	72.5	75.0	75.0	25.0	35.7	53.5	60.5	70.0	70.0	
6	73.0	32.5	44.0	65.0	70.0	70.0	22.6	31.9	47.6	54.0	65.0	65.0	
7	62.0	30.0	39.5	58.0	58.0	58.0	20.6	28.8	43.0	48.6	56.0	56.0	
8	51.0	27.9	36.0	52.0	52.0	52.0	19.0	26.2	39.2	44.3	51.0	51.0	
9	45.0	26.1	32.8	47.0	46.5	46.0	17.5	24.1	36.0	40.6	46.0	46.0	
10	40.5	24.5	30.2	43.0	42.0	41.0	16.3	22.2	33.2	37.4	42.0	42.0	
11		23.2	28.0	40.0	39.0	38.0	15.3	20.6	30.8	34.7	38.0	38.0	
12		22.0	26.1	36.0	35.0	34.0	14.3	19.3	28.7	32.3	35.0	35.0	
14		20.0	23.0	30.5	30.0	29.0	12.7	17.0	25.3	28.5	30.0	30.0	
16							11.5	15.2	22.6	25.0	25.0	25.0	
18							10.5	13.8	20.5	21.2	21.2	20.6	
Reeving	12	11					10						
Hook	60t anchor hook												
Telescoping mode	I	1	1	1	1	1	1	1	1	1	1	1	2
	II	1	1	1	1	1	2	1	1	1	1	2	2
	III	1	1	1	1	2	1	1	1	1	2	2	1
	IV	1	1	1	2	1	1	1	1	2	2	1	1
	V	1	1	2	1	1	1	1	2	2	1	1	1
	VI	1	2	1	1	1	1	3	2	1	1	1	1

Unit: ton

RATED CAPACITY CHART

with boom only

10t fixed counterweight moved forward +32t movable counterweight moved backward

Outriggers fully extended to 8.2m Over side and rear working area

Working radius (m)	Boom length (m)												
	28.0	28.0	28.0	28.0	28.0	28.0	32.7	32.7	32.7	32.7	32.7	32.7	
3													
3.5													
4	25.0	25.0	45.0	60.0	75.0	75.0							
4.5	23.5	23.5	42.5	56.2	71.0	71.0							
5	22.2	22.1	40.1	52.8	68.0	68.0	19.5	24.2	28.7	43.6	60.0	65.0	
6	19.9	20.0	36.1	47.1	62.0	62.0	17.5	22.0	25.8	39.6	54.0	59.0	
7	18.1	18.0	32.9	42.3	56.0	56.0	15.8	20.0	23.4	36.3	49.0	54.0	
8	16.5	16.4	30.1	38.6	50.0	50.0	14.4	18.4	21.3	33.4	44.5	50.0	
9	15.2	15.1	27.8	35.3	47.0	47.0	13.2	16.9	19.6	30.9	41.0	46.0	
10	14.1	14.0	25.7	32.5	42.0	42.0	12.2	15.7	18.1	28.8	38.0	42.0	
11	13.1	13.0	24.0	30.1	37.5	37.5	11.3	14.7	16.8	27.0	35.0	38.0	
12	12.3	12.1	22.5	28.0	35.0	35.0	10.5	13.8	15.6	25.4	33.0	35.0	
14	10.8	10.7	19.9	24.6	30.0	30.0	9.3	12.2	13.8	22.5	29.0	30.0	
16	9.7	9.5	17.9	21.8	25.6	25.6	8.2	10.9	12.2	20.0	26.0	26.0	
18	8.8	8.6	16.3	19.6	21.8	21.3	7.4	9.9	11.0	18.0	22.4	22.1	
20	8.0	7.9	14.9	17.9	18.8	17.7	6.7	9.0	10.0	16.4	19.4	18.4	
22	7.3	7.1	13.7	16.3	16.2	14.8	6.1	8.3	9.1	15.0	16.9	15.6	
24							5.6	7.7	8.3	13.8	14.7	13.2	
26							5.1	7.1	7.6	12.8	12.7	11.3	
Reeving	9						8						
Hook	60t anchor hook												
Telescoping mode	I	1	1	1	1	1	2	1	1	1	1	1	2
	II	1	1	1	1	2	2	1	1	1	1	2	2
	III	1	1	1	2	2	2	1	1	1	2	2	2
	IV	1	1	2	2	2	1	1	2	3	2	2	2
	V	2	3	2	2	1	1	3	3	2	2	2	1
	VI	3	2	2	1	1	1	3	2	2	2	1	1

Unit: ton

RATED CAPACITY CHART

with boom only

10t fixed counterweight moved forward +32t movable counterweight moved backward

Outriggers fully extended to 8.2m

Over side and rear working area

Working radius (m)	Boom length (m)												
	37.4	37.4	37.4	37.4	37.4	37.4	42.1	42.1	42.1	42.1	42.1	42.1	
5.5													
6	19.5	24.0	27.0	27.0	45.0	58.0							
7	18.0	22.0	24.5	24.5	41.5	54.0							
8	16.5	20.0	22.5	22.5	38.5	50.0	17.3	20.5	20.5	25.0	30.5	41.5	
9	15.0	18.5	20.5	20.5	36.0	46.0	16.1	19.0	19.0	23.0	28.0	39.0	
10	14.0	17.0	19.0	19.0	33.5	43.0	15.0	17.5	17.5	21.5	26.0	36.5	
11	13.0	15.5	17.5	17.5	31.5	40.0	14.0	16.0	16.0	20.0	24.0	34.5	
12	12.1	14.5	16.4	16.0	29.5	37.0	13.1	15.0	15.0	18.5	22.0	32.5	
14	10.7	12.7	14.4	13.9	26.5	30.0	11.5	13.0	13.0	16.0	19.2	28.5	
16	9.5	11.2	12.6	12.3	24.0	26.9	10.2	11.4	11.2	14.0	17.0	26.0	
18	8.6	9.9	11.2	11.0	21.5	22.9	9.2	10.2	9.9	12.6	15.2	23.5	
20	7.8	8.9	10.0	9.9	19.0	19.3	8.3	9.2	8.9	11.4	13.7	20.1	
22	7.1	8.1	9.1	9.0	17.5	16.4	7.6	8.4	8.0	10.4	12.4	17.2	
24	6.5	7.4	8.3	8.2	15.5	14.0	6.9	7.6	7.3	9.5	11.3	14.8	
26	6.0	6.8	7.6	7.5	13.5	12.1	6.3	7.0	6.7	8.7	10.4	12.9	
28	5.5	6.3	7.0	6.9	11.9	10.5	5.8	6.4	6.1	7.8	9.5	11.3	
30	5.1	5.8	6.5	6.3	10.5	9.1	5.4	5.9	5.6	7.4	8.8	9.9	
32	4.8	5.4	6.0	5.8	9.3	8.0	5.0	5.5	5.1	6.9	8.1	8.7	
34							4.6	5.1	4.7	6.4	7.5	7.7	
36							4.3	4.7	4.4	6.0	7.0	6.8	
Reeving	7						5						
Hook	60t anchor hook												
Telescoping mode	I	1	1	1	1	1	2	1	1	1	1	1	2
	II	1	1	1	1	2	2	1	1	1	2	3	2
	III	1	1	2	3	2	2	1	2	3	3	2	2
	IV	2	3	3	2	2	2	3	3	3	2	2	2
	V	3	3	2	2	2	2	3	3	2	2	2	2
	VI	3	2	2	2	2	1	3	2	2	2	2	2

Unit: ton

RATED CAPACITY CHART

with boom only

10t fixed counterweight moved forward +32t movable counterweight moved backward

Outriggers fully extended to 8.2m Over side and rear working area

Working radius (m)	Boom length (m)												
	46.8	46.8	46.8	46.8	46.8	46.8		51.5	51.5	51.5	51.5	51.5	
8													
9	16.4	17.0	20.0	24.0	29.5	32.0							
10	15.3	15.7	18.5	22.5	27.5	31.0		15.0	17.2	20.0	24.0	27.5	
11	14.4	14.5	17.2	21.0	25.7	30.0		13.8	16.0	18.8	22.5	26.0	
12	13.5	13.5	16.1	19.7	24.1	28.0		12.9	15.0	17.7	21.2	24.5	
14	12.0	11.8	14.1	17.5	21.3	25.0		11.3	13.2	15.7	19.0	22.0	
16	10.7	10.4	12.5	15.6	19.0	22.5		10.0	11.7	14.0	17.2	20.0	
18	9.6	9.2	11.1	13.9	17.1	20.0		8.9	10.4	12.6	15.6	18.0	
20	8.6	8.2	10.0	12.5	15.5	18.0		8.0	9.4	11.4	14.2	16.3	
22	7.8	7.4	9.1	11.3	14.1	16.2		7.2	8.5	10.4	12.8	14.7	
24	7.1	6.7	8.3	10.3	12.9	14.3		6.5	7.7	9.5	11.7	13.3	
26	6.5	6.1	7.6	9.4	11.8	12.4		5.9	7.0	8.7	10.7	12.1	
28	6.0	5.5	7.0	8.6	10.9	10.8		5.4	6.4	8.0	9.8	10.7	
30	5.5	5.0	6.4	7.9	9.7	9.4		4.9	5.9	7.4	9.0	9.3	
32	5.1	4.6	5.9	7.3	8.6	8.2		4.5	5.4	6.8	8.3	8.1	
34	4.7	4.3	5.5	6.7	7.6	7.2		4.1	5.0	6.2	7.7	7.1	
36	4.4	3.9	5.1	6.2	6.7	6.3		3.8	4.6	5.7	6.8	6.2	
38	4.1	3.6	4.7	5.7	5.9	5.5		3.5	4.3	5.2	6.0	5.4	
40	3.8	3.3	4.4	5.3	5.2	4.8		3.2	4.0	4.8	5.3	4.7	
42								3.0	3.7	4.5	4.6	4.1	
44								2.8	3.4	4.2	4.1	3.5	
Reeving	4												
Hook	60t anchor hook												
Telescoping mode	I	1	1	1	1	2	3		1	1	1	2	3
	II	1	1	2	3	3	2		1	2	3	3	3
	III	2	3	3	3	2	2		3	3	3	3	2
	IV	3	3	3	2	2	2		3	3	3	2	2
	V	3	3	2	2	2	2		3	3	2	2	2
	VI	3	2	2	2	2	2		3	2	2	2	2

Unit: ton

RATED CAPACITY CHART

with boom only

10t fixed counterweight moved forward +32t movable counterweight moved backward

Outriggers fully extended to 8.2m

Over side and rear working area

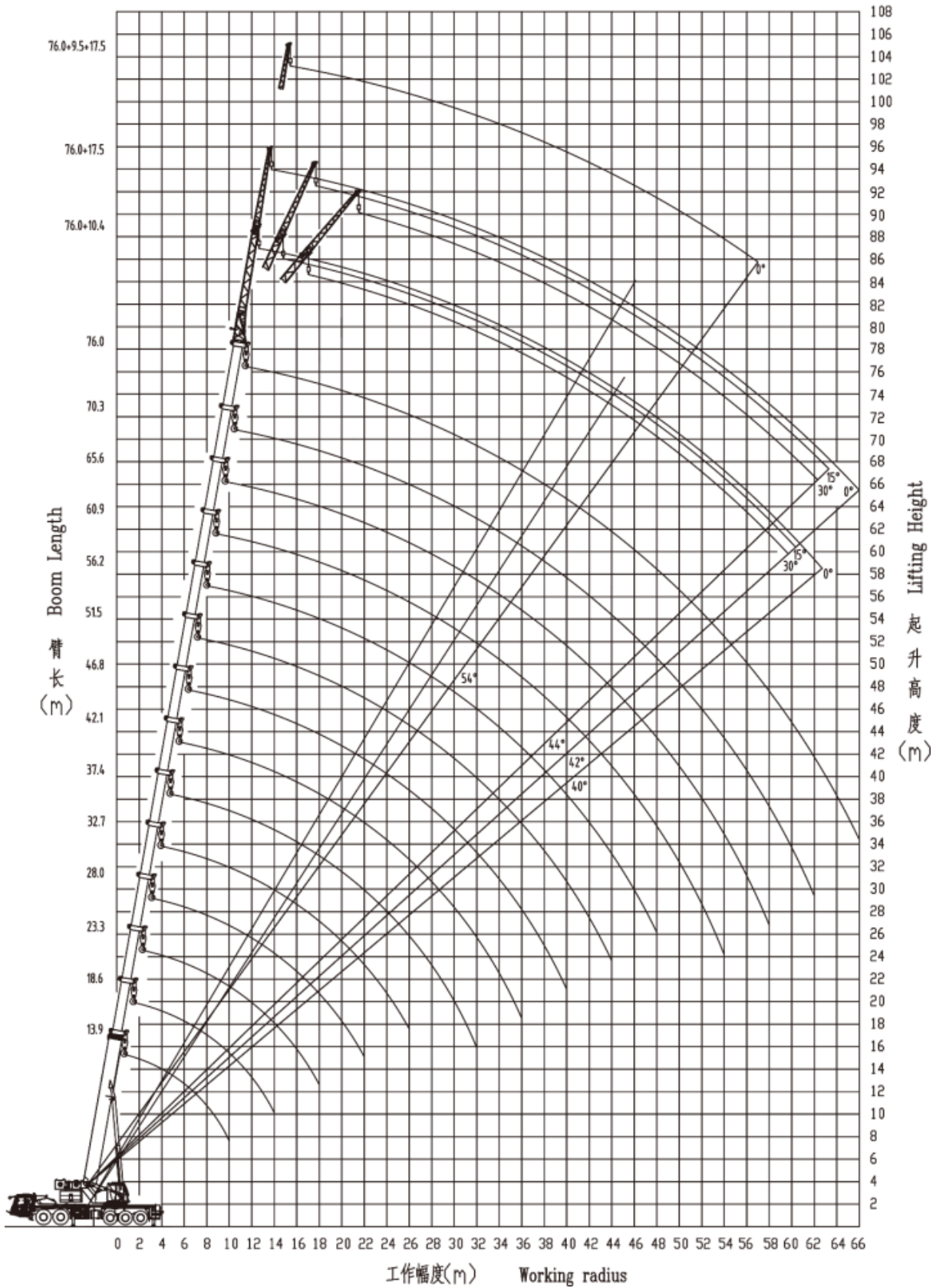
Working radius (m)	Boom length (m)												
	56.2	56.2	56.2	56.2	60.9	60.9	60.9		65.6	65.6	70.3	76	
12	14.0	16.2	18.8	22.0									
14	12.4	14.4	16.8	19.8	13.0	15.3	17.5						
16	11.0	12.8	15.2	18.0	11.9	13.8	16.0		12.5	14.0			
18	9.9	11.6	13.8	16.4	10.8	12.5	14.5		11.5	13.0	11.8		
20	8.9	10.4	12.6	14.9	9.8	11.4	13.2		10.5	12.0	11.0	8.8	
22	8.0	9.5	11.5	13.5	8.9	10.4	12.1		9.7	11.0	10.2	8.6	
24	7.3	8.7	10.5	12.3	8.2	9.6	11.1		8.9	10.2	9.5	8.3	
26	6.7	7.9	9.6	11.2	7.5	8.8	10.2		8.2	9.4	8.8	8.0	
28	6.1	7.3	8.9	10.2	6.9	8.1	9.4		7.6	8.7	8.2	7.7	
30	5.6	6.7	8.3	9.3	6.4	7.5	8.6		7.0	8.0	7.6	7.2	
32	5.2	6.2	7.7	8.3	5.9	7.0	8.0		6.5	7.4	7.1	6.7	
34	4.8	5.7	7.1	7.3	5.5	6.5	7.4		6.1	6.9	6.6	6.2	
36	4.4	5.3	6.6	6.4	5.1	6.1	6.7		5.7	6.4	6.1	5.7	
38	4.1	4.9	6.1	5.6	4.7	5.7	5.9		5.3	5.9	5.7	5.3	
40	3.8	4.6	5.5	4.9	4.4	5.3	5.2		5.0	5.5	5.3	4.9	
42	3.5	4.3	4.9	4.3	4.1	4.9	4.5		4.7	4.9	4.9	4.5	
44	3.2	4.0	4.3	3.7	3.8	4.5	4.0		4.4	4.3	4.6	4.2	
46	3.0	3.7	3.8	3.2	3.5	4.1	3.4		4.1	3.8	4.2	3.9	
48	2.8	3.4	3.3	2.7	3.3	3.7	3.0		3.8	3.3	3.7	3.6	
50					3.1	3.2	2.5		3.5	2.9	3.3	3.4	
52					2.9	2.8	2.1		3.2	2.5	2.9	3.0	
54					2.7	2.5	1.8		2.8	2.1	2.5	2.6	
56									2.5	1.8	2.2	2.2	
58									2.2	1.5	1.8	1.9	
60											1.6	1.6	
62											1.3	1.4	
64												1.1	
66												0.9	
Reeving	3												
Hook	60t anchor hook												
Telescoping mode	I	1	1	2	3	1	2	3		2	3	3	4
	II	2	3	3	3	3	3	3		3	3	3	4
	III	3	3	3	3	3	3	3		3	3	3	4
	IV	3	3	3	2	3	3	3		3	3	3	4
	V	3	3	2	2	3	3	2		3	3	3	4
	VI	3	2	2	2	3	2	2		3	2	3	4

Unit: ton

LIFTING HEIGHT CURVE

with boom + extension + jib

起升高度曲线 Lifting height curve



RATED CAPACITY CHART

boom + jib & boom + extension + jib

10t fixed counterweight moved forward +32t movable counterweight moved backward

Outriggers fully extended to 8.2m

Over side and rear working area

Boom + jib/extension (m)																
Boom	70.3								76							
+Extension	9.5	/			/			9.5	9.5	/			/			9.5
+Jib	/	10.4			17.5			17.5	/	10.4			17.5			17.5
Boom angle (°)	0°	0°	15°	30°	0°	15°	30°	0°	0°	0°	15°	30°	0°	15°	30°	0°
80	7.20	6.80	6.00	5.50	4.20	3.10	2.50	3.40	6.00	5.80	5.40	5.10	3.70	2.90	2.40	3.00
78	7.00	6.50	5.70	5.30	4.00	3.00	2.45	3.20	5.80	5.50	5.10	4.80	3.50	2.80	2.30	2.80
76	6.80	6.20	5.40	5.10	3.75	2.90	2.40	3.00	5.60	5.20	4.80	4.50	3.30	2.65	2.20	2.60
74	6.50	5.80	5.10	4.90	3.50	2.75	2.30	2.80	5.40	4.90	4.50	4.20	3.10	2.50	2.10	2.40
72	6.20	5.40	4.80	4.60	3.25	2.60	2.20	2.60	5.20	4.50	4.20	3.90	2.90	2.35	2.00	2.25
70	5.70	5.00	4.50	4.30	3.05	2.45	2.10	2.45	4.80	4.10	3.90	3.60	2.70	2.20	1.90	2.10
68	5.30	4.60	4.20	4.00	2.85	2.30	2.05	2.30	4.40	3.80	3.60	3.35	2.55	2.10	1.85	1.90
66	4.90	4.30	3.90	3.75	2.70	2.20	2.00	2.15	4.00	3.50	3.30	3.10	2.40	2.00	1.80	1.75
64	4.50	4.00	3.60	3.50	2.55	2.10	1.95	2.00	3.60	3.20	3.05	2.85	2.30	1.95	1.75	1.60
62	4.10	3.70	3.40	3.25	2.40	2.05	1.90	1.85	3.30	2.90	2.80	2.65	2.15	1.85	1.70	1.45
60	3.80	3.40	3.20	3.05	2.30	1.95	1.85	1.70	3.00	2.65	2.55	2.45	2.05	1.80	1.65	1.30
58	3.50	3.10	3.00	2.85	2.20	1.90	1.80	1.55	2.70	2.40	2.30	2.25	1.95	1.75	1.60	1.15
56	3.20	2.90	2.80	2.65	2.10	1.85	1.75	1.40	2.50	2.20	2.10	2.05	1.80	1.65	1.55	1.00
54	3.00	2.70	2.60	2.45	2.00	1.80	1.70	1.25	2.30	2.00	1.90	1.85	1.65	1.55	1.50	0.85
52	2.80	2.50	2.40	2.30	1.90	1.75	1.65	1.10	2.10	1.80	1.75	1.70	1.50	1.40	1.35	
50	2.60	2.30	2.20	2.15	1.80	1.70	1.60	1.00	1.90	1.65	1.60	1.55	1.35	1.25	1.20	
48	2.35	2.15	2.05	2.00	1.70	1.65	1.55	0.90	1.70	1.50	1.45	1.40	1.20	1.15	1.10	
46	2.10	1.95	1.90	1.85	1.60	1.55	1.50	0.80	1.45	1.30	1.25	1.20	1.10	1.05	1.00	
44	1.85	1.75	1.70	1.65	1.50	1.45	1.40		1.25	1.10	1.05	1.00	0.95	0.90	0.85	
42	1.65	1.55	1.50	1.45	1.30	1.25	1.20		1.05	0.90	0.85	0.80	0.80			
40	1.45	1.35	1.30	1.25	1.15	1.10	1.05		0.90							
38	1.30	1.20	1.15	1.10	1.00	0.90	0.85									
36	1.15	1.05	1.00	0.95	0.85											
34	1.00	0.90	0.85	0.80												
32	0.90															
Reeving	1															
Hook	8t															

RATED CAPACITY CHART

boom + jib & boom + extension + jib

10t fixed counterweight moved forward +32t movable counterweight moved backward

Outriggers fully extended to 8.2m Over side and rear working area

Boom + jib/extension (m)																
Boom	70.3								76							
+Extension	9.5	/			/			9.5	9.5	/			/			9.5
+Jib	/	10.4			17.5			17.5	/	10.4			17.5			17.5
Boom angle (°)	0°	0°	15°	30°	0°	15°	30°	0°	0°	0°	15°	30°	0°	15°	30°	0°
80	7.20	6.80	6.00	5.50	4.20	3.10	2.50	3.40	6.00	5.80	5.40	5.10	3.70	2.90	2.40	3.00
78	7.00	6.50	5.70	5.30	4.00	3.00	2.45	3.20	5.80	5.50	5.10	4.80	3.50	2.80	2.30	2.80
76	6.80	6.20	5.40	5.10	3.75	2.90	2.40	3.00	5.60	5.20	4.80	4.50	3.30	2.65	2.20	2.60
74	6.50	5.80	5.10	4.90	3.50	2.75	2.30	2.80	5.40	4.90	4.50	4.20	3.10	2.50	2.10	2.40
72	6.20	5.40	4.80	4.60	3.25	2.60	2.20	2.60	5.20	4.50	4.20	3.90	2.90	2.35	2.00	2.25
70	5.70	5.00	4.50	4.30	3.05	2.45	2.10	2.45	4.80	4.10	3.90	3.60	2.70	2.20	1.90	2.10
68	5.30	4.60	4.20	4.00	2.85	2.30	2.05	2.30	4.40	3.80	3.60	3.35	2.55	2.10	1.85	1.90
66	4.90	4.30	3.90	3.75	2.70	2.20	2.00	2.15	4.00	3.50	3.30	3.10	2.40	2.00	1.80	1.75
64	4.50	4.00	3.60	3.50	2.55	2.10	1.95	2.00	3.60	3.20	3.05	2.85	2.30	1.95	1.75	1.60
62	4.10	3.70	3.40	3.25	2.40	2.05	1.90	1.85	3.30	2.90	2.80	2.65	2.15	1.85	1.70	1.45
60	3.80	3.40	3.20	3.05	2.30	1.95	1.85	1.70	3.00	2.65	2.55	2.45	2.05	1.80	1.65	1.30
58	3.50	3.10	3.00	2.85	2.20	1.90	1.80	1.55	2.70	2.40	2.30	2.25	1.95	1.75	1.60	1.15
56	3.20	2.90	2.80	2.65	2.10	1.85	1.75	1.40	2.50	2.20	2.10	2.05	1.80	1.65	1.55	1.00
54	3.00	2.70	2.60	2.45	2.00	1.80	1.70	1.25	2.25	2.00	1.90	1.85	1.65	1.55	1.50	0.85
52	2.70	2.50	2.40	2.30	1.90	1.75	1.65	1.10	2.00	1.80	1.70	1.70	1.50	1.40	1.35	
50	2.40	2.25	2.20	2.15	1.80	1.70	1.60	1.00	1.70	1.55	1.50	1.45	1.35	1.25	1.20	
48	2.15	2.00	1.95	1.90	1.70	1.65	1.55	0.90	1.45	1.35	1.30	1.25	1.15	1.10	1.05	
46	1.90	1.75	1.70	1.65	1.50	1.45	1.40		1.25	1.10	1.05	1.00	0.95	0.90	0.85	
44	1.65	1.55	1.50	1.45	1.35	1.30	1.25		1.00	0.90	0.85	0.80				
42	1.45	1.35	1.30	1.25	1.15	1.10	1.05		0.85							
40	1.25	1.15	1.10	1.05	1.00	0.95	0.90									
38	1.10	1.00	0.95	0.90	0.85	0.80										
36	0.90	0.85	0.80													
34	0.80															
32																
Reeving	1															
Hook	8t															

ZOOMLION

Zoomlion Heavy Industry Science & Technology Co.,Ltd.

Add: No.677, Lugu Road, Zoomlion Industrial Park, Changsha, Hunan, China, 410205

Copyright©2024 Zoomlion. All rights reserved. Reproduction and copying of any part of contents is not allowed for any purposes without Zoomlion's approval.



Product specifications are subject to change without notice and obligation. The photographs and/or drawing in this document are for illustrative purposes only. Please consult your local ZOOMLION dealer for more information.

website:en.zoomlion.com